

Cumberland/North Yarmouth Joint Standing Committee

*Pam Ames
Clark Whittier
Paul Napolitano*

*Mike Edes
Bill Stiles
George Turner*

MINUTES

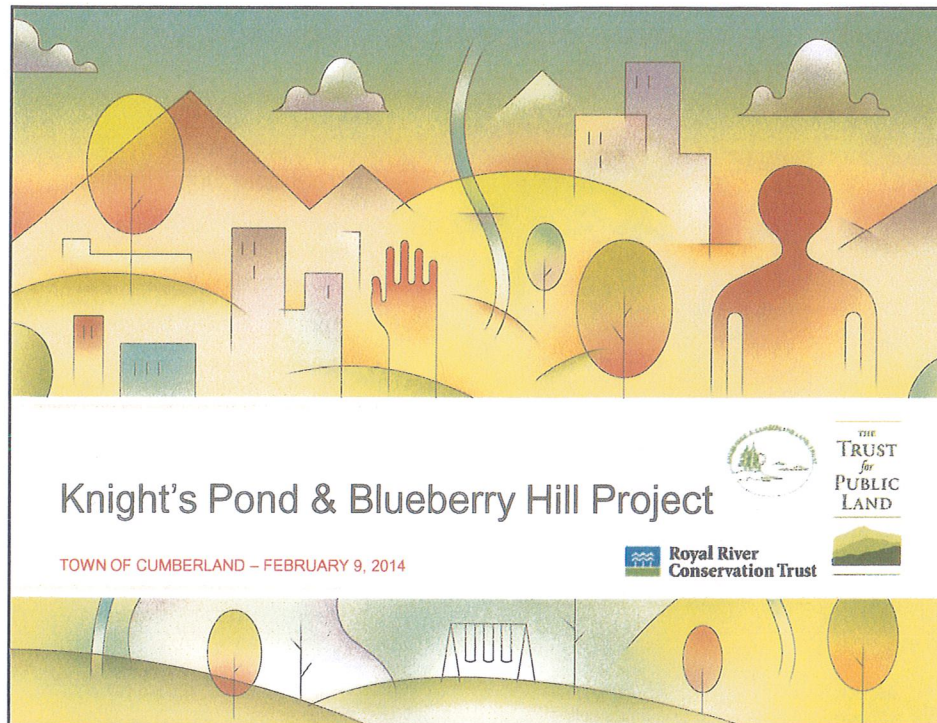
**Wednesday, February 4, 2105
Cumberland Town Hall
4:30 PM**

PRESENT: Bill Stiles, George Turner, Pam Ames, Pam Ames, Clark Whittier, Paul Napolitano, Bill Shane, Rosemary Roy, Thomas Bennett, Brian Bickford, Penny Asherman.

- I. Welcome
- II. Report from Land Trust re: Knight's Pond property (report attached).
- III. Report from Library Director, Thomas Bennett (report attached).
- IV. Report from Recreation Director, Brian Bickford (report attached).
- V. Review of FY2016 Assessment for Library and Recreation Services (assessment attached).
- VI. Adjournment
Meeting adjourned at 6:05 p.m.

Respectfully submitted by,

Brenda Moore
Committee Secretary

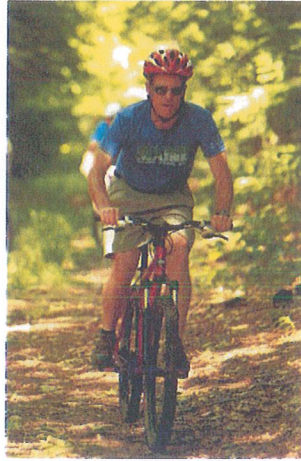


Physical Description

- 215 acres
- Upland forests
- 46 acre pond
- Critical bird habitat
- Streams supporting wild Brook Trout in Rines Forest
- Views of Casco Bay
- Oak-Hickory forest
- Spotted Wintergreen
- Close to town centers & schools

THE TRUST for PUBLIC LAND
CONSERVING LAND FOR PEOPLE

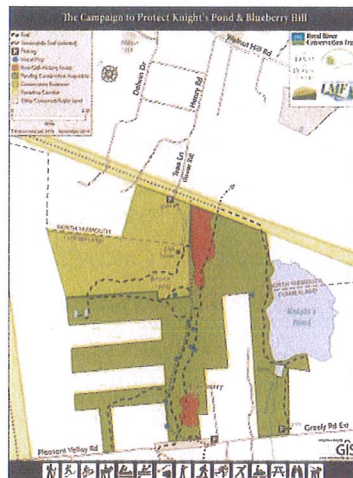
Public Benefits



- Recreational Opportunities
 - Hiking, running, biking, skiing, snowshoeing, skating, snowmobiling
 - Hunting, fishing, trapping
 - Canoeing, kayaking
 - Nature observation, picnicking
- Water quality protection
- Wildlife habitat
- Educational opportunities
 - Schools, Land Trusts, Recreation Department

THE TRUST & PUBLIC LAND
CONSERVING LAND FOR PEOPLE

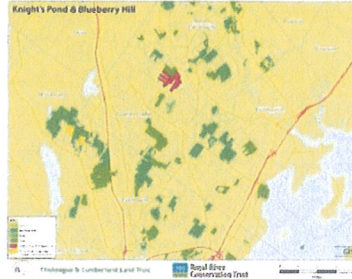
Knight's Pond & Blueberry Hill Trail Map



- Existing trails network
 - Excellent condition
 - Trails actively used
 - Connectivity to:
 - FAA property
 - Farwell Forest
 - Utility corridor
 - North Yarmouth

THE TRUST & PUBLIC LAND
CONSERVING LAND FOR PEOPLE

Regional Connectivity



- Part of 1,600 acre forest block
- Long term goal: build regional greenway
 - FAA Property
 - Farwell Forest
 - Rines Forest
 - Godsoe Addition
 - Idlewood
 - Merrill Forest
 - Hadlock Forest in Falmouth
- Recreation & habitat corridor

THE TRUST for PUBLIC LAND
CONSERVING LAND FOR PEOPLE

Knight's Pond Project Overview



- Public/private partnership
- TPL holds option to purchase at appraised FMV
- During option period:
 - Raise acquisition funds
 - Complete due diligence
 - Develop ownership structure
 - Stewardship and management plans
 - Improvements to dam

THE TRUST for PUBLIC LAND
CONSERVING LAND FOR PEOPLE

Outcomes

- Municipal Ownership
- Conservation Easements held by CCLT, RRCT
 - Stewardship
 - Monitoring
 - Education
- Management structure and maintenance costs
- Guaranteed public access
- Off street parking

THE TRUST PUBLIC LAND
CONSERVING LAND FOR PEOPLE

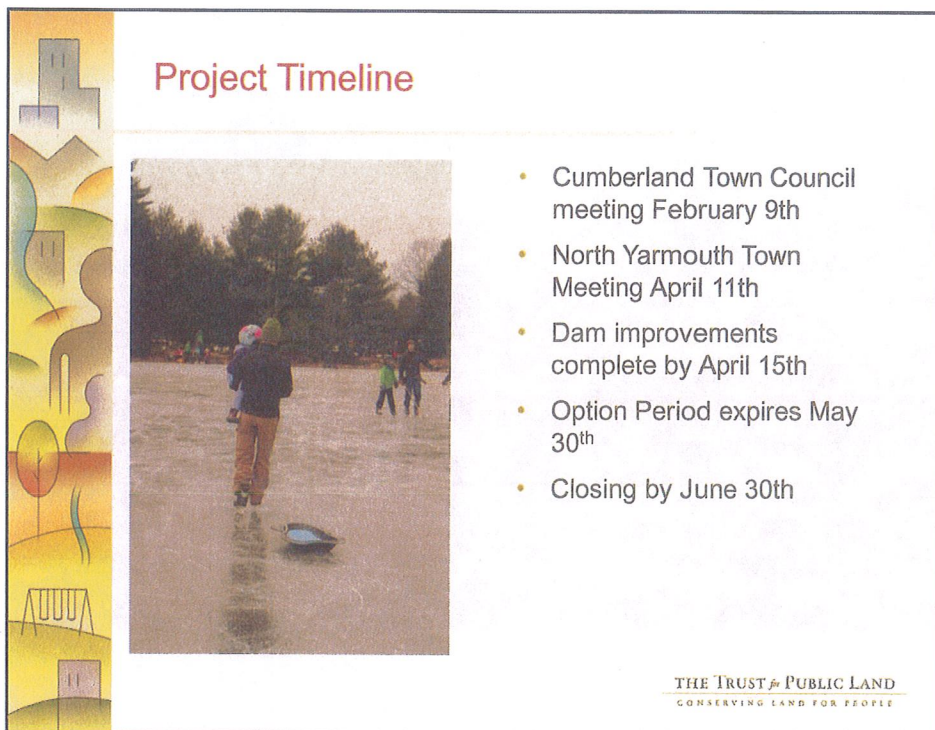
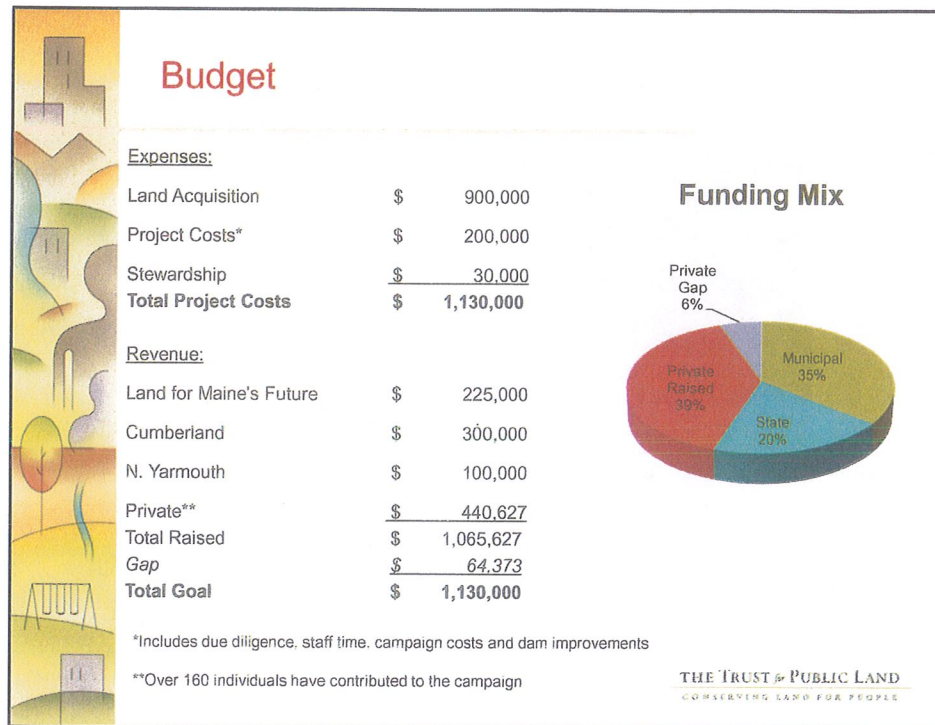
Community Support

- 17 letters of support
- 250 attendees for skating party
- 80 + attendees for hike with naturalists
- Neighborhood house parties
- Dozens of volunteers
- 160 + donors

Upcoming Events:

- Valentine's Day snowshoe

THE TRUST PUBLIC LAND
CONSERVING LAND FOR PEOPLE



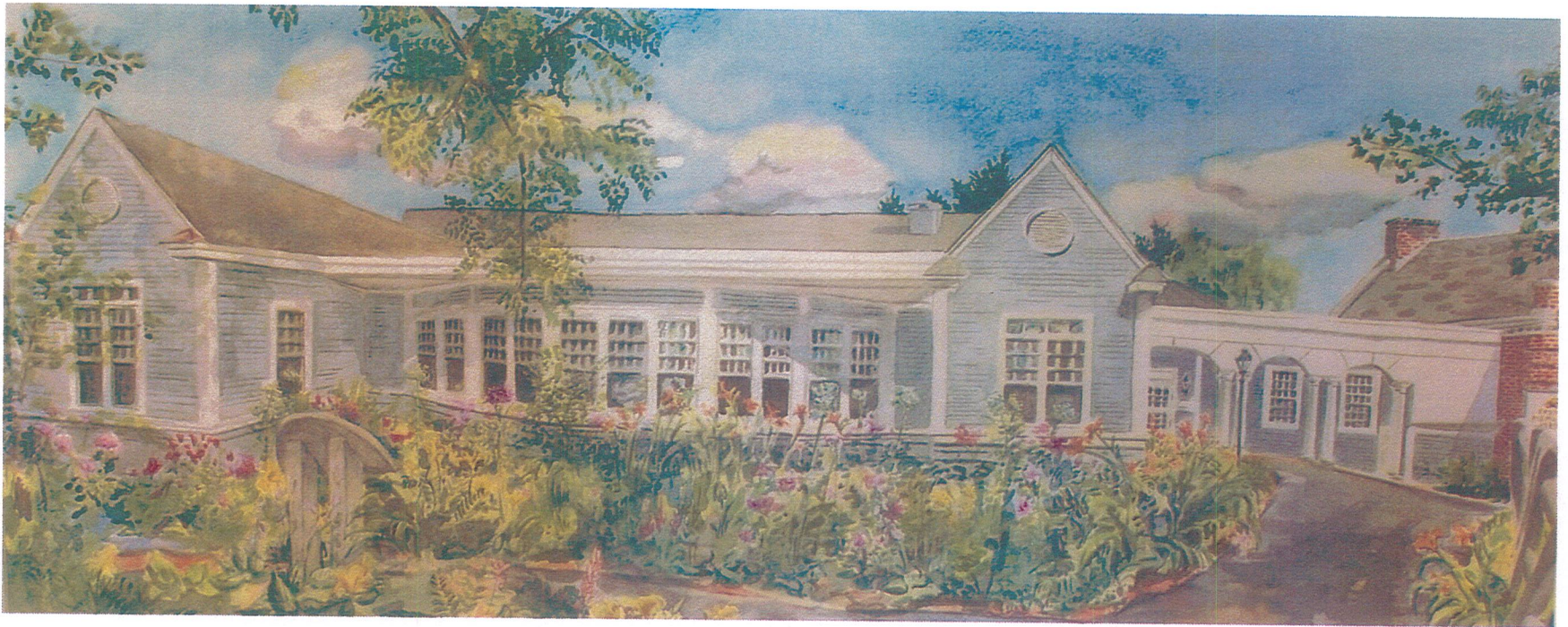
Cumberland Action Steps

- Execute a P&S agreement with TPL
- Purchase the property for \$300,000
- Hold title to land in Cumberland subject to CE held by CCLT
- Execute a Project Agreement with LMF
- Appoint a representative to serve on a future joint management committee with N. Yarmouth

THE TRUST FOR PUBLIC LAND
CONSERVING LAND FOR PEOPLE

Thank You!

Prince Memorial Library

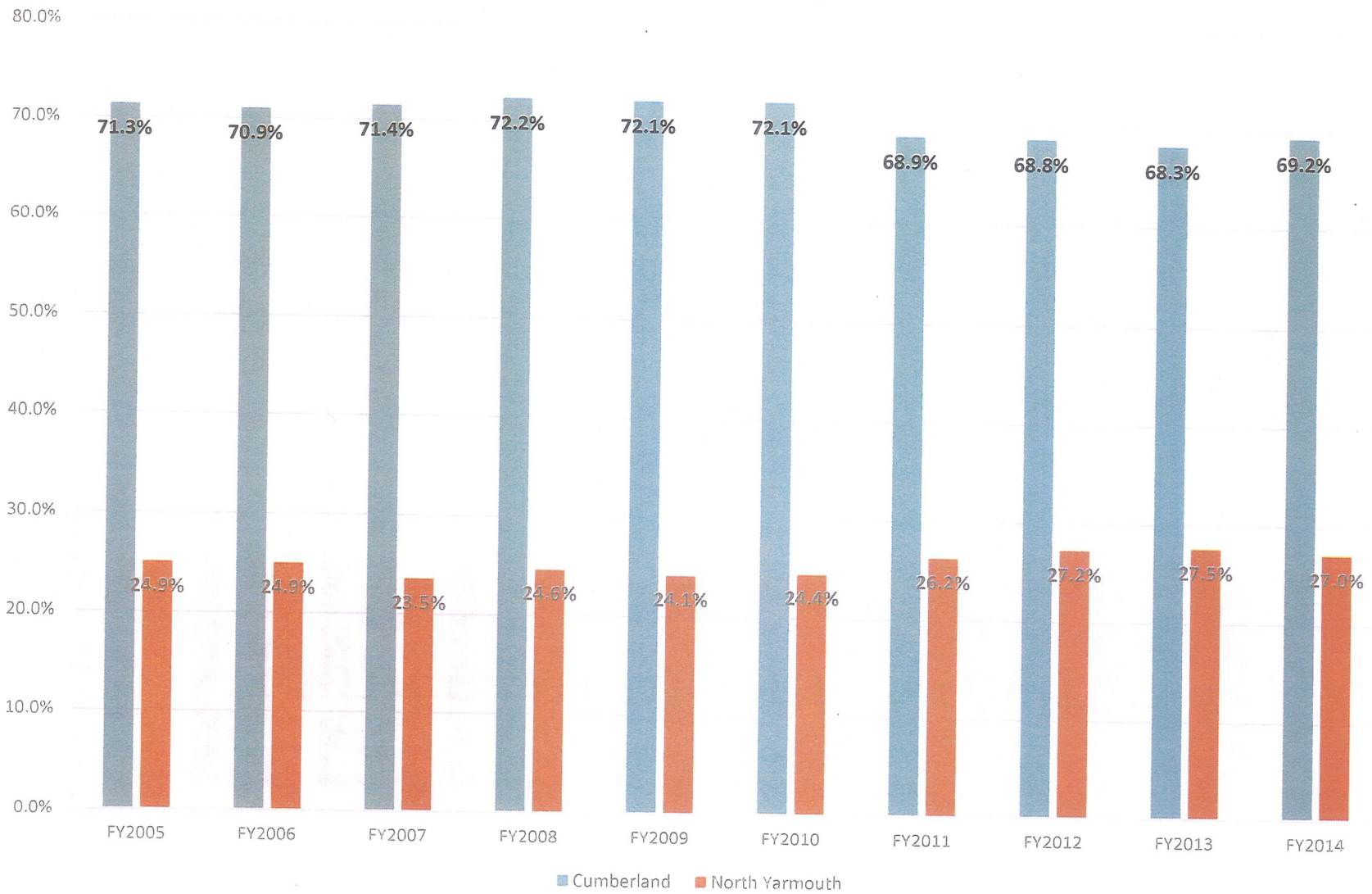


Services to North Yarmouth
February 4, 2015

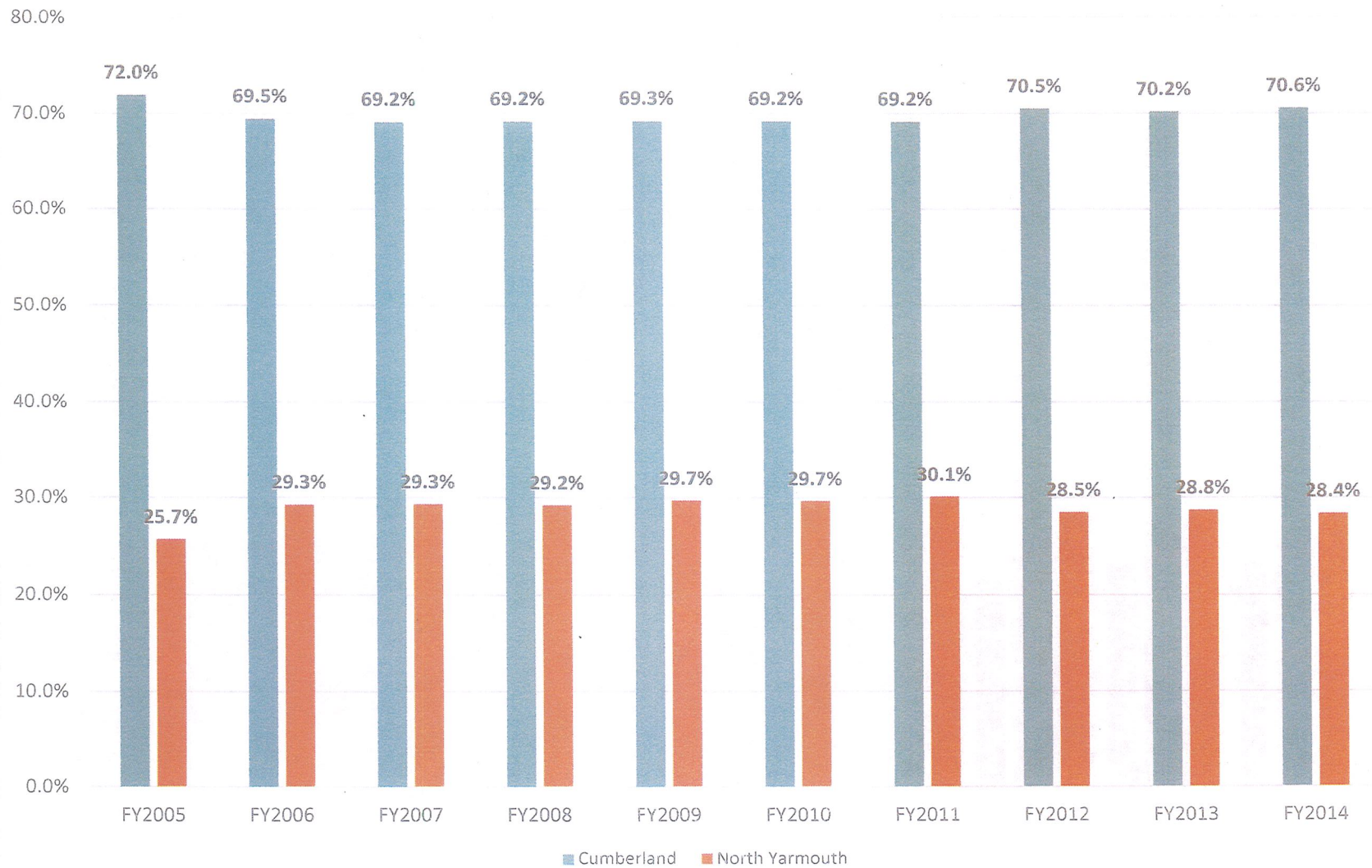
Prince Memorial Library Ten Years of Circulation



Prince Memorial Library Circulation Percentages



Prince Memorial Library Patron Percentages



Library Use Value Calculator

<http://www.maine.gov/msl/services/calculator.htm>

Usage	Library Service	Value		North Yarmouth Value
25,549	Adult Books Borrowed	\$	459,882	\$ 124,168
36,048	Children & Young Adult Books Borrowed	\$	360,480	\$ 97,330
3,222	Audiobooks Borrowed	\$	80,550	\$ 21,749
11,800	Movies Borrowed	\$	200,600	\$ 54,162
43	Adult Programs and Classes Attended	\$	602	\$ 163
219	Children's Programs Attended	\$	2,518	\$ 680
	Total Value	\$	1,104,632	\$ 298,251

	FY2014	To date FY2015
Youth Programs	219	180
Youth Numbers	5,886	
Adult Programs	43	97
Adult Numbers	4,755	

2014 Summer Reading Program: 27.5% North Yarmouth residents

Cumberland-North Yarmouth
Community Education & Recreation

Review of Our Services, 2014

Overview

Our role is to provide community education and recreation in our communities with oversight of the Community Education & Recreation Advisory Board.

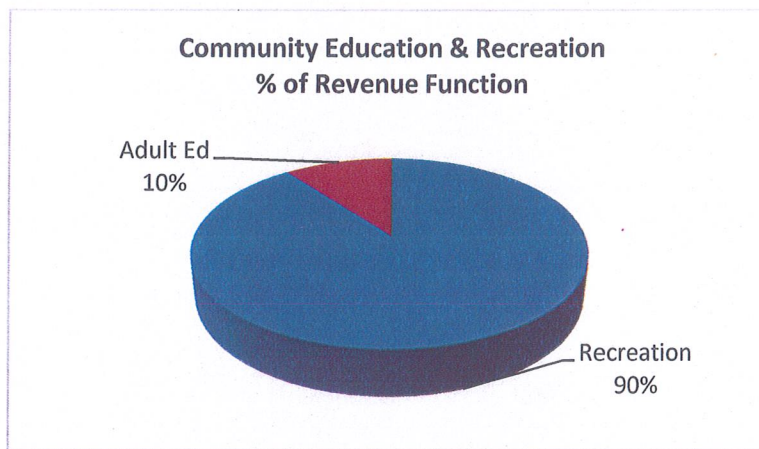
The Community Education & Recreation Advisory Board is comprised of Cumberland and North Yarmouth residents, Town Counselors and a MSAD 51 representative. Members include:

- Cumberland: Chris Fitzpatrick (Chair), Bill Green, Pam Russell, Richard Wolfe, Steven Carey, Pete O'Donnell, Teri Maloney-Kelly and Nancy Storey
- North Yarmouth: Johnna Mulligan and Melissa Fowler
- MSAD 51: Bob Vail
- Cumberland Town Councilor: Shirley Storey-King
- North Yarmouth Town Selectman: ~~Clark Whittier~~ *Alex Carr*

Our last review with the Joint Standing Committee occurred in 2011. We will refer to 2011 to indicate how Community Recreation has changed over the 4 years.

Community Education and Recreation

- Prior to July 1, 2014, all revenue and expenses related to Adult Education resided on the books of MSAD 51. This includes, but is not limited to, wages, program revenue and state subsidies for Adult Education programs. The projected annual budget for Adult Education is \$75,000 and the net margin is breakeven.
- Effective July 1, 2014, all of Adult Education was 'shifted' by MSAD 51 to the Town of Cumberland and is now folded into Recreation. Although the MSAD 51 'lost' \$14,000 of State subsidy, we are now in compliance and we have streamline reporting and management of this function.
- All revenue and expenses related to Recreation reside on the books of the Town of Cumberland. This includes wages for 4.6 full-time equivalents, wages for various programs we run and non-salary expenses necessary to run programming. The projected annual expense budget is \$650,000.



Departmental Goals for 2011 (Where We Stand in 2014)

- Successful implementation of new registration and scheduling software, ActiveNet. *(Completed and now 51% of all registrations are made on-line.)*
- Development of programmatic income statements for the major recreation programs. *(Completed on an as needed basis and focus on improving financial impact whenever possible.)*
- Assess and evaluate new and existing programs qualitatively and financially. *(Move to 70/30 revenue share model.)*
- Develop a coordinated communication tool for the Town of Cumberland. *(Use of Constant Contact, ActiveNet and a website to get word out.)*
- Improve and augment the development of the Quarterly Education and Recreation Brochure. *(Reduced from 4 to 3 brochures thereby saving \$3500.)*
- In conjunction with the Advisory Board, develop a community survey to be distributed for feedback. *(Completed with a 95% approval rating.)*
- Develop and implement a care-based after school program and summer camp program that meets the needs of the community. *(Home run! Kudos to Pete Bingham.)*

Departmental Goals for 2015

- Work closely with Aging in Place Committee to provide opportunities for our seniors.
- Explore opportunities that may present themselves at the Payson property and Knight's Pond.
- Develop programmatic feedback tools for programs. We need to solicit more community feedback on our programs.

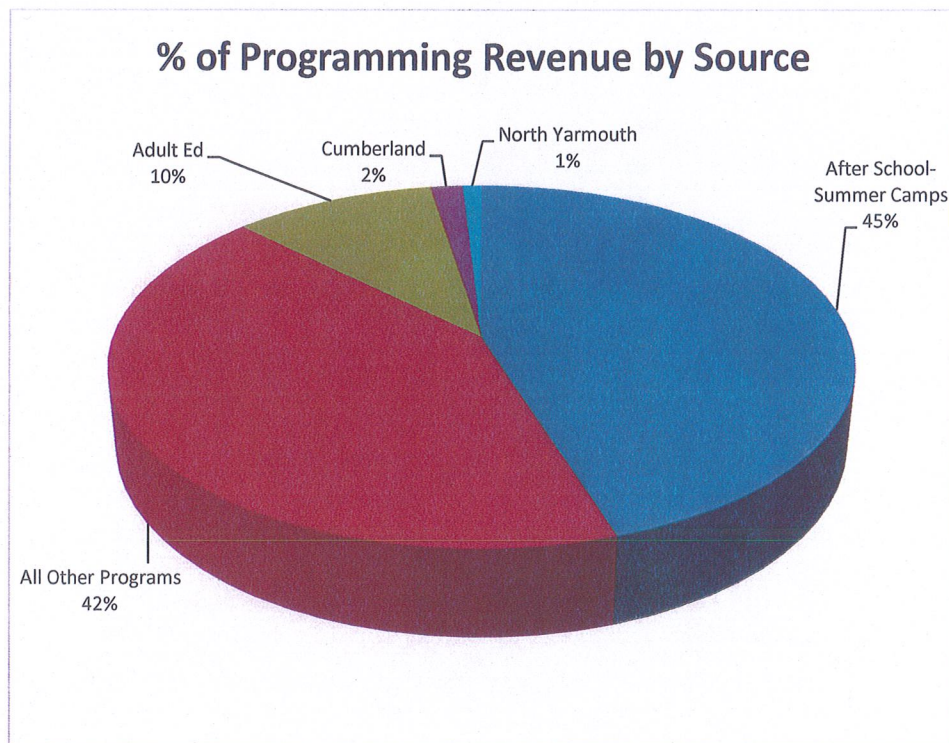
Hours of Operation

- We staff our offices from 8:00 am to 5:00 pm on Monday, Tuesday and Wednesday. We staff them from 8:00 am to 6:00 pm on Thursday. Friday's we are closed.
- Programming hours run most daylight and early evening hours 7-days a week. Seasonal fluctuations occur in most programming.

Programming

Community Education & Recreation offers several programs (346 programs) throughout the year. We are able to offer a wide range of programs given our economies of scale. It is our assessment that several existing programs would be discontinued without economies of scale between the two communities.

That said two large programs comprise 45% of the revenues. They are the After School Program during the school year and Day/Middle School Camp during the summer. The After School Program, once run by the YMCA for 17 kids, is now run by our department and tops out at around 90 kids (and a waiting list of 19).



Statistics

A review of participant information is important. Our registrations across 346 programs is as follows:

- We register approximately 4,917 Cumberland-North Yarmouth participants of a total of 5,412 participants (or approximately 91%) for recreation programs. This represents an increase of 37% over 2011 levels.
- The breakdown by season and town is as follows:

2014	Cumberland	North Yarmouth	CNY Ratio
Fall	897	349	72% - 28%
Spring	606	226	73% - 27%
Summer	1,072	433	71% - 29%
Winter	970	364	73% - 27%
Totals	3,545	1,372	72% - 28%

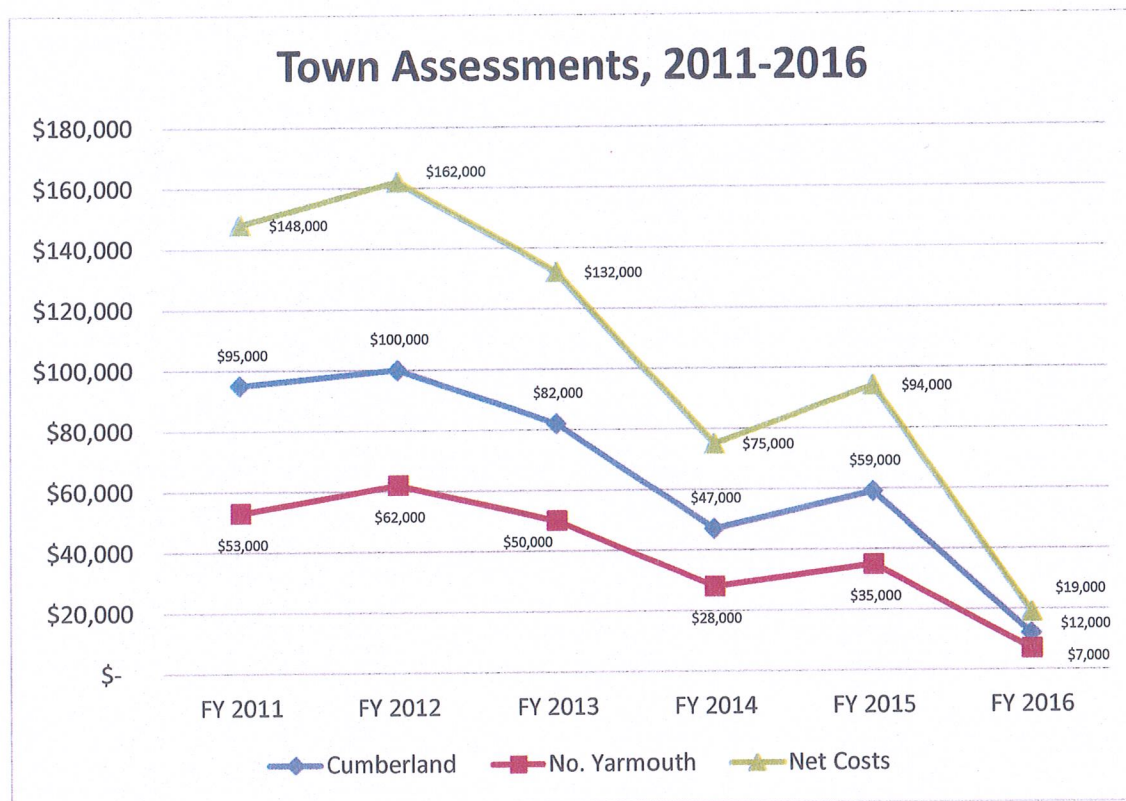
2011	Cumberland	North Yarmouth	CNY Ratio
Fall	560	283	66% - 34%
Spring	285	136	68% - 32%
Summer	1,124	486	70% - 30%
Winter	481	233	67% - 33%
Totals	2,450	1,138	68% - 32%

Financial Overview

Since 2011, revenue and expenses have grown 33%. At the same time, the contributions from Cumberland and North Yarmouth have dropped by \$136,000 or 716%. The following is a summary of financial information for Community Education & Recreation:

2014	Totals	Per Total Participants
Participant Revenue	\$631,000	\$116.59
North Yarmouth	\$7,000	\$1.29
Cumberland	\$12,000	\$2.22
Total Revenue	\$650,000	\$120.10
Wages & Benefits	\$462,000	\$85.36
Program Related Non-Salaries	\$188,000	\$34.74
Total Expenses	\$650,000	\$120.10

2011	Totals	Per Total Participants
Participant Revenue	\$335,000	\$85.67
North Yarmouth	\$54,000	\$13.81
Cumberland	\$101,000	\$25.83
Total Revenue	\$490,000	\$125.31
Wages & Benefits	\$315,000	\$80.56
Program Related Non-Salaries	\$175,000	\$44.75
Total Expenses	\$490,000	\$125.31



Activities Revenue Report

Activity Number - Name		Term	Enrollments			Income
			Res	NonRes	Total	
1353 - Nordic Ski Equipment	Rental	Winter 2014	15	0	15	\$1,050.00
1355 - LV Inst Ski Prog	Lessons, Skiing &	Winter 2014	73	0	73	\$19,345.00
1358 - LV Inst Ski Prog	Lessons, Rent, Ski & Transport	Winter 2014	21	0	21	\$7,245.00
1359 - Shawnee Peak Ski	Program - Lift Ticket &	Winter 2014	81	0	81	\$20,602.00
1363 - Shawnee Peak Ski	Program - Lifts, Rent &	Winter 2014	2	0	2	\$1,065.00
1365 - Youth Nordic Ski	Instruction	Winter 2014	18	15	33	\$2,645.00
1431 - Co-Ed Kindergarten	Basketball	Winter 2014	20	0	20	\$800.00
1432 - Girl Bball Skills, Drills &	Scrimmages - 1-2 Grade	Winter 2014	26	0	26	\$1,040.00
1433 - Boys Bball Skills, Drills	& Scrimmages - 1 Grade	Winter 2014	27	0	27	\$1,100.00
1434 - Boys Bball Skills, Drills	& Scrimmages - 2 Grade	Winter 2014	18	0	18	\$720.00
1435 - Boys Community	League Basketball - Grades 3	Winter 2014	33	1	34	\$1,880.00
1436 - Girl Community League	Basketball - Grades 3 & 4 #1	Winter 2014	23	0	23	\$1,265.00
1437 - Boys Community	League Basketball - Grades 3	Winter 2014	11	0	11	\$1,375.00
1438 - Girl Community League	Basketball - Grades 3 & 4 #2	Winter 2014	2	0	2	\$250.00
1439 - Boys Travel Basketball	Team - Grade 7	Winter 2014	9	0	9	\$1,125.00
1441 - Girls Travel Basketball	Team - Grade 7	Winter 2014	11	0	11	\$1,250.00
1449 - BoysTravel Team	Basketball League - Grade 5	Winter 2014	8	0	8	\$875.00
1450 - BoysTravel Team	Basketball League - Grade 6	Winter 2014	10	1	11	\$1,405.00
1451 - GirlsTravel Team	Basketball League - Grade 5	Winter 2014	6	0	6	\$750.00
1452 - GirlsTravel Team	Basketball League - Grade 6	Winter 2014	7	0	7	\$875.00
1454 - Fun With French!		Winter 2014	20	0	20	\$980.00
1455 - Boston Bruins Trip		Spring 2014	11	0	11	\$1,620.00
1456 - Hodge Podge Session 1		Winter 2014	29	1	30	\$4,500.00
1457 - Cartooning		Winter 2014	19	0	19	\$1,260.00
1458 - Hodge Podge Session 2		Spring 2014	29	1	30	\$4,410.00
1459 - Mother/Son Activity	Night	Spring 2014	10	0	10	\$100.00
1460 - Daddy/Daughter Activity	Night	Spring 2014	9	0	9	\$90.00

1461 - FAMILY Bingo Night	(Back by Popular Demand!)	Winter 2014	11	3	14	\$140.00
1463 - Mad Science - Jump	Into the Future	Winter 2014	10	0	10	\$450.00
1467 - Yoga For Kids		Winter 2014	5	0	5	\$480.00
1468 - Babysitter's Training	Session 1	Spring 2014	14	0	14	\$990.00
1469 - Babysitter's Training	Session 2	Spring 2014	14	0	14	\$980.00
1470 - Youth Instructional	Lacrosse	Spring 2014	26	0	26	\$1,050.00
1472 - Core & Stretch Training		Winter 2014	5	0	5	\$400.00
1473 - Introduction to LEGO	Robotics & MindStorms Softwa	Winter 2014	12	2	14	\$860.00
1474 - 360 Circuit - Session 1	Monday	Winter 2014	10	0	10	\$800.00
1475 - 360 Circuit - Session 2	Wednesday	Winter 2014	6	0	6	\$480.00
1476 - 360 Circuit - Session 3	Thursday AM	Winter 2014	13	0	13	\$1,008.00
1477 - 360 Circuit - Choose 2	Sessions	Winter 2014	6	0	6	\$870.00
1479 - Indoor Soccer - K-1		Spring 2014	18	0	18	\$630.00
1480 - Indoor Soccer - 2-3		Spring 2014	16	0	16	\$560.00
1481 - Indoor Soccer - 4-6		Spring 2014	12	0	12	\$420.00
1485 - Landscape	Painting-Design Elements	Winter 2014	10	2	12	\$908.00
1486 - Landscape	Painting-Design Principles	Winter 2014	8	2	10	\$685.80
1487 - Spring Running Club		Spring 2014	133	1	134	\$8,040.00
1488 - Getting Started With	Colored Pencils	Winter 2014	6	3	9	\$522.00
1489 - Greely Baseball Winter	Skills/Drills Camp-K-1	Winter 2014	14	0	14	\$1,200.00
1490 - Greely Baseball Winter	Skills/Drills Camp-2-3	Winter 2014	11	2	13	\$1,115.00
1491 - Greely Baseball Winter	Skills/Drills Camp-4-8	Winter 2014	24	1	25	\$2,135.00
1492 - Masters Swim Program		Winter 2014	9	8	17	\$2,650.00
1493 - Grow Your Own Organic	Garden!	Spring 2014	11	2	13	\$130.00
1494 - First Aid Training -	January	Winter 2014	1	0	1	\$45.00
1497 - The Colby Art Museum	& Governor's Restaurant	Winter 2014	5	0	5	\$150.00
1498 - Evening Community	CPR - Feb 11	Winter 2014	1	0	1	\$45.00
1500 - Evening Community	CPR - Apr 8	Spring 2014	1	0	1	\$45.00
1503 - Morning Community	CPR - Jan 11	Winter 2014	2	0	2	\$90.00
1506 - BLS for Healthcare	Providers - February 1	Winter 2014	3	0	3	\$135.00
1507 - BLS for Healthcare	Providers - March 1	Winter 2014	1	0	1	\$45.00
1509 - Fresh Handmade Pasta	- Triple Play!	Winter 2014	6	1	7	\$112.00
1510 - Starting From Seeds -	Getting a Jump Start!	Winter 2014	5	0	5	\$60.00

1511 - Learn to Knit - the	Basics	Winter 2014	5	2	7	\$230.00
1513 - Winter Open Art Studio		Winter 2014	8	0	8	\$432.00
1514 - Morning Tai Chi for	Seniors	Winter 2014	6	1	7	\$358.50
1515 - Cardio - Body Sculpting	- Session 1 - 1 X Week	Winter 2014	4	1	5	\$255.00
1516 - Cardio - Body Sculpting	- Session 1 - 2 X Week	Winter 2014	7	1	8	\$620.50
1517 - Cardio - Body Sculpting	- Session 1 - 3 X Week	Winter 2014	3	0	3	\$298.00
1518 - Cardio - Body Sculpting	- Session 2 - 1 X Week	Winter 2014	5	1	6	\$278.50
1519 - Cardio - Body Sculpting	- Session 2 - 2 X Week	Winter 2014	6	1	7	\$548.00
1520 - Cardio - Body Sculpting	- Session 2 -3 X Week	Winter 2014	2	0	2	\$193.00
1521 - Kripalu Yoga for Teens	and Adults-1	Winter 2014	14	2	16	\$886.00
1522 - Kripalu Yoga for Teens	and Adults-2	Winter 2014	12	2	14	\$774.00
1524 - Twisted Double-Strand	Necklace	Winter 2014	5	0	5	\$50.00
1525 - EngSAT 1: Monday	class	Winter 2014	19	7	26	\$2,470.00
1526 - EngSAT 2: Tuesday	class	Winter 2014	11	10	21	\$2,000.00
1527 - EngSAT 3: Wednesday	class	Winter 2014	16	11	27	\$2,565.00
1528 - EngSAT 4: Thursday	class	Winter 2014	9	6	15	\$1,430.00
1529 - MathSAT 1: Monday	class	Winter 2014	13	14	27	\$2,570.00
1530 - MathSAT 2: Tuesday	class	Winter 2014	17	9	26	\$2,475.00
1531 - MathSAT 3: Thursday	class	Winter 2014	16	11	27	\$2,565.00
1533 - Veils		Winter 2014	2	0	2	\$64.00
1535 - Aquatic Fitness -	Session 1	Winter 2014	16	5	21	\$817.50
1536 - Aquatic Fitness -	Session 2	Winter 2014	18	5	23	\$1,292.00
1537 - Pre-School "Spinning	Sprouts" - Session 1	Winter 2014	10	1	11	\$570.00
1538 - Pre-School "Spinning	Sprouts" - Session 2	Winter 2014	8	2	10	\$520.00
1539 - Ballet/Jazz Combo	Class - Session 1	Winter 2014	4	0	4	\$200.00
1540 - Ballet/Jazz Combo	Class - Session 2	Winter 2014	4	0	4	\$200.00
1541 - Tap/Hip Hop Combo	Class - Session 1	Winter 2014	7	0	7	\$350.00
1542 - Tap/Hip Hop Combo	Class - Session 2	Winter 2014	7	0	7	\$350.00
1543 - Sounds of Silence -	GMS - Winter Session	Winter 2014	13	0	13	\$1,419.00
1544 - Sounds of Silence -	GMS - Spring Session	Spring 2014	9	0	9	\$1,125.00
1545 - Sounds of Silence -	NYMS - Winter Session	Winter 2014	25	0	25	\$2,670.25
1546 - Sounds of Silence -	NYMS - Spring Session	Spring 2014	29	0	29	\$2,765.00
1547 - Parent/Child Swim	Lessons - Session 1	Winter 2014	7	4	11	\$535.00

1548 - Preschool Swim	Lessons - Session 1-1	Winter 2014	13	1	14	\$640.00
1549 - Preschool Swim	Lessons - Session 1-2	Winter 2014	11	3	14	\$660.00
1550 - Preschool Swim	Lessons - Session 2-1	Spring 2014	11	2	13	\$615.00
1552 - Preschool Swim	Lessons - Session 2-2	Spring 2014	11	3	14	\$660.00
1553 - Youth Swim Lessons -	Session 1-1	Winter 2014	14	2	16	\$900.00
1554 - Youth Swim Lessons -	Session 1-2	Winter 2014	8	4	12	\$700.00
1555 - Youth Swim Lessons -	Session 1-1	Spring 2014	15	5	20	\$1,160.00
1556 - Youth Swim Lessons -	Session 1-2	Spring 2014	13	4	17	\$975.00
1557 - Winter Masters Swim	Program - 10 Punch Card	Winter 2014	9	9	18	\$1,110.00
1558 - Winter Lap Swimming -	10 Card Punch	Winter 2014	5	7	12	\$480.00
1559 - Winter Lap Swimming -	25 Card Punch	Winter 2014	13	4	17	\$1,305.00
1560 - Holiday Vacation Camp	- All Week	Winter 2014	4	0	4	\$840.00
1561 - Holiday Vacation Camp	- 12/23/13	Winter 2014	11	0	11	\$385.00
1562 - Holiday Vacation Camp	- 12/26/13	Winter 2014	10	1	11	\$385.00
1563 - Holiday Vacation Camp	- 12/27/13	Winter 2014	14	1	15	\$525.00
1564 - Holiday Vacation Camp	- 12/30/13	Winter 2014	22	0	22	\$770.00
1565 - Holiday Vacation Camp	- 12/31/13	Winter 2014	15	0	15	\$525.00
1566 - Holiday Vacation Camp	- 1/2/14	Winter 2014	29	1	30	\$1,050.00
1568 - Holiday Vacation Camp	- 1/3/14	Winter 2014	25	0	25	\$875.00
1569 - Ed2Go - Winter 2014		Winter 2014	5	1	6	\$570.00
1570 - Zumba !		Winter 2014	11	0	11	\$550.00
1571 - Bitty Ballers -	Pre-School Bball Prog -12:00	Winter 2014	12	0	12	\$480.00
1572 - Bitty Ballers -	Pre-School Bball Prog - 1:00	Winter 2014	6	5	11	\$480.00
1573 - Parent/Child Swim	Lessons - Session 2	Winter 2014	10	5	15	\$725.00
1574 - February Vacation	Camp 2/14	Winter 2014	20	0	20	\$900.00
1575 - February Vacation	Camp 2/18	Winter 2014	15	0	15	\$525.00
1576 - February Vacation	Camp 2/19	Winter 2014	25	0	25	\$875.00
1577 - February Vacation	Camp 2/20	Winter 2014	20	0	20	\$700.00
1578 - February Vacation	Camp 2/21	Winter 2014	17	0	17	\$595.00
1579 - February Vacation	Camp all 5 days	Winter 2014	14	0	14	\$2,310.00
1580 - Morning Tai Chi for	Seniors- Private Lessons	Winter 2014	1	0	1	\$75.00
1581 - Lifeguard Training	Class-Blended Learning	Winter 2014	2	5	7	\$1,605.00
1583 - April Vacation Spring	Baseball Clinic	Spring 2014	54	2	56	\$5,340.00

1584 - Boys Lacrosse Camp		Summer 2014	15	0	15	\$1,350.00
1585 - Spring Masters Swim	Program - 10 Punch Card	Spring 2014	10	7	17	\$1,037.00
1586 - Kudos To Healthy	Cooking Class with Mrs. TCR	Spring 2014	16	0	16	\$784.00
1588 - Summer Literacy	Workshop	Summer 2014	14	2	16	\$3,184.00
1589 - T-Ball Fun Games		Summer 2014	33	0	33	\$1,320.00
1590 - Princess Dance Camp		Summer 2014	15	4	19	\$2,235.00
1591 - Pre-School "Spinning	Sprouts"	Spring 2014	9	2	11	\$570.00
1592 - Pre-School "Spinning	Sprouts"	Spring 2014	9	0	9	\$460.00
1593 - Tap/Hip Hop Combo	Class	Spring 2014	7	0	7	\$350.00
1594 - Summer Track		Summer 2014	25	3	28	\$3,530.00
1596 - Ranger Soccer	Camp-Half Day	Summer 2014	16	1	17	\$1,710.00
1597 - Ranger Soccer	Camp-Full day	Summer 2014	46	0	46	\$7,385.00
1598 - Hip Hop Dance Camp		Summer 2014	8	1	9	\$1,240.00
1599 - Grand Slam	Tennis-session 1	Summer 2014	17	2	19	\$3,605.00
1600 - Grand Slam Tennis-	session 2	Summer 2014	13	1	14	\$3,020.00
1601 - Co-ed Kindergarten	Soccer	Summer 2014	7	0	7	\$335.00
1602 - Co-ed 1st & 2nd Grade	Soccer Clinic	Summer 2014	8	0	8	\$360.00
1603 - Boys 3rd-6th Grade	Soccer Clinic	Summer 2014	10	1	11	\$505.00
1604 - Girls 3rd-6th Grade	Soccer Clinic	Summer 2014	4	0	4	\$180.00
1607 - Fall Running Club		Fall 2014	110	1	111	\$6,706.00
1608 - Hodge Podge-Summer	Edition	Summer 2014	13	0	13	\$1,820.00
1609 - Maine Days Camp		Summer 2014	11	0	11	\$1,760.00
1611 - Book, Cook 'n Craft	Camp	Summer 2014	21	1	22	\$3,775.00
1612 - Magic Dragon	Pre-School Day Camp - Week	Summer 2014	14	0	14	\$1,365.00
1614 - ER - Junior Golf	Program - 3-5 Grade	Spring 2014	19	0	19	\$2,202.00
1616 - Magic Dragon	Pre-School Day Camp- Week 2	Summer 2014	18	0	18	\$1,785.00
1617 - Magic Dragon	Pre-School Day Camp- Week 3	Summer 2014	16	2	18	\$1,830.00
1618 - Magic Dragon	Pre-School Day Camp- Week 4	Summer 2014	15	1	16	\$1,595.00
1619 - Magic Dragon	Pre-School Day Camp- Week 5	Summer 2014	14	1	15	\$1,585.00
1620 - Magic Dragon	Pre-School Day Camp- Week 6	Summer 2014	12	1	13	\$1,365.00
1621 - Summer Art Camp		Summer 2014	16	0	16	\$1,920.00
1622 - Summer Clay Camp		Summer 2014	9	0	9	\$1,080.00
1623 - Memorial Day Fun Run		Spring 2014	5	1	6	\$30.00

1624 - Memorial Day 5K		Spring 2014	9	1	10	\$170.00
1625 - CNY United Recreation	Fall Kindergarten Soccer	Fall 2014	64	3	67	\$3,360.00
1626 - Kiddie Kickers	Pre-School Soccer- Tuesdays	Fall 2014	4	1	5	\$200.00
1627 - Kiddie Kickers	Pre-School Soccer- Thursdays	Fall 2014	5	0	5	\$200.00
1628 - Eureka! The Inventors	Camp	Summer 2014	19	0	19	\$4,390.00
1629 - Reactions in Action	Camp	Summer 2014	15	5	20	\$4,650.00
1630 - Evening Youth Swim	Lessons Session 1	Summer 2014	11	5	16	\$930.00
1631 - Evening Youth Swim	Lessons-Session 2	Summer 2014	0	0	0	\$40.00
1632 - Evening Youth Swim	Lessons-Session 1	Summer 2014	9	1	10	\$560.00
1633 - Evening Youth Swim	Lessons-Session 2	Summer 2014	0	0	0	\$30.00
1634 - Morning Youth Swim	Lessons -Session 1	Summer 2014	12	5	17	\$985.00
1638 - Evening Preschool	Swim Class-Session1	Summer 2014	12	4	16	\$930.00
1639 - Evening Preschool	Swim Lessons-Session2	Summer 2014	0	0	0	\$95.00
1640 - Morning Preschool	Swim Lesson-Session1	Summer 2014	9	6	15	\$905.00
1642 - Maine Tennis Academy	Recreation Tennis Clinic K-2	Summer 2014	5	1	6	\$360.00
1643 - Maine Tennis Academy	Recreation Tennis Clinic K-2	Summer 2014	8	2	10	\$580.00
1644 - Maine Tennis Academy	Recreation Tennis Clinic 3-6	Summer 2014	6	0	6	\$360.00
1645 - Maine Tennis Academy	Recreation Tennis Clinic 3-6	Summer 2014	10	0	10	\$525.00
1646 - First Kicks Soccer	Program	Summer 2014	15	3	18	\$1,470.00
1647 - Mini Kickers Soccer	Program	Summer 2014	15	2	17	\$1,635.00
1648 - British Challenger	Soccer Camp	Summer 2014	21	1	22	\$2,980.00
1649 - British Challenger	Soccer Camp- Advanced	Summer 2014	20	4	24	\$4,596.00
1650 - Kick off the Summer	with K&K	Summer 2014	31	0	31	\$3,730.00
1651 - CNY United Soccer 1st	Grade Program	Fall 2014	70	1	71	\$3,374.00
1652 - Mainely Stars Field	Hockey Camp- Half day	Summer 2014	6	7	13	\$1,233.00
1653 - Mainely Stars Field	Hockey Camp-Full Day	Summer 2014	13	0	13	\$2,340.00
1654 - April 2014 Vacation	Camp - All Week	Spring 2014	15	0	15	\$2,475.00
1655 - April 2014 Vacation	Camp - 4/18/14	Spring 2014	29	1	30	\$1,350.00
1656 - April 2014 Vacation	Camp - 4/22/14	Spring 2014	13	1	14	\$490.00
1657 - April 2014 Vacation	Camp - 4/23/14	Spring 2014	14	0	14	\$490.00
1658 - April 2014 Vacation	Camp - 4/24/14	Spring 2014	9	0	9	\$315.00
1659 - April 2014 Vacation	Camp - 4/25/14	Spring 2014	15	1	16	\$560.00
1661 - Rangers Basketball	Camp Grades 1/2 Co-Ed	Summer 2014	7	0	7	\$210.00
1662 - Rangers Basketball	Camp Boys Grades 3-8	Summer 2014	25	0	25	\$3,250.00

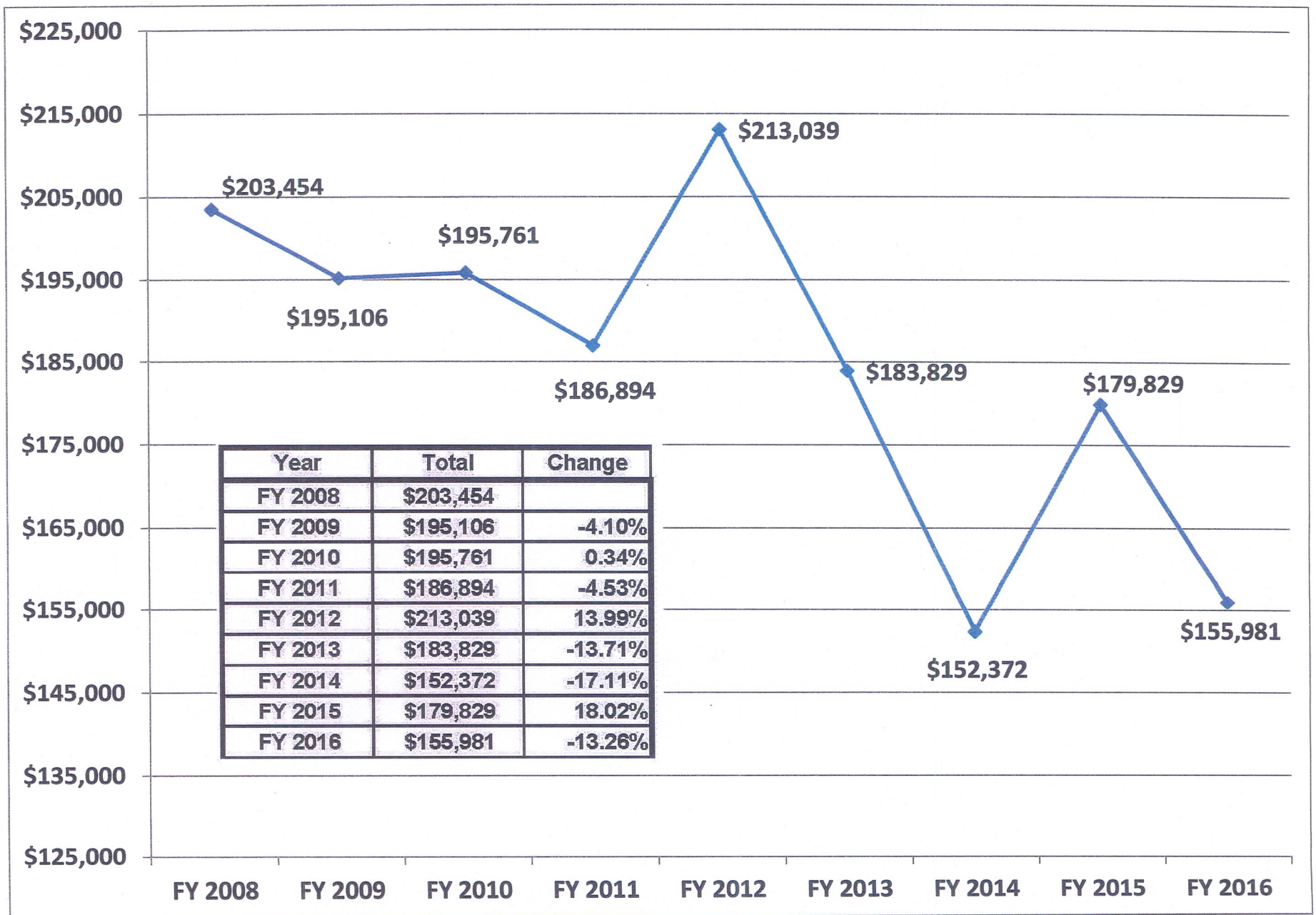
1663 - Rangers Basketball	Camp Girls Grades 3-8	Summer 2014	13	0	13	\$1,690.00
1664 - Lifeguard Training	Class-Blended Learning	Summer 2014	3	1	4	\$785.00
1665 - Lifeguard Training	Class-Blended Learning	Summer 2014	1	0	1	\$225.00
1666 - My Fair Lady Matinee!		Summer 2014	7	1	8	\$304.00
1667 - Aquatic Fitness -	Session 1	Spring 2014	19	4	23	\$786.00
1668 - Aquatic Fitness -	Session 2	Summer 2014	22	4	26	\$852.00
1669 - Aquatic Fitness -	Session 3	Summer 2014	0	0	0	\$447.50
1670 - Spring Lap Swimming -	10 Card Punch	Spring 2014	8	5	13	\$485.00
1671 - Spring Lap Swimming -	25 Card Punch	Spring 2014	6	1	7	\$535.00
1673 - Tate House and SMCC	Lunch	Spring 2014	14	2	16	\$480.00
1674 - The Savannah	Disputation - Portland Stage	Spring 2014	7	0	7	\$224.00
1675 - McLaughlin Gardens &	Maurice's	Spring 2014	11	1	12	\$360.00
1676 - Goat Island Lighthouse	& Kennebunkport	Summer 2014	6	0	6	\$180.00
1677 - Morning Tai Chi for	Seniors	Spring 2014	0	1	1	\$65.00
1678 - Painting Clouds With	Acrylics	Spring 2014	9	3	12	\$844.00
1679 - Spring Zumba		Spring 2014	7	0	7	\$156.00
1680 - Spring Open Art Studio		Spring 2014	4	1	5	\$118.00
1682 - Drawing Birds With	Colored Pencils	Spring 2014	7	2	9	\$580.00
1683 - Spring Kripalu Yoga for	Adults & Older Teens	Spring 2014	17	2	19	\$886.00
1686 - Summer Kripalu Yoga	for Adults & Older Teens	Summer 2014	9	1	10	\$478.00
1688 - First Aid Training -	6/21/14	Summer 2014	1	0	1	\$50.00
1689 - Local History 101!		Spring 2014	3	0	3	\$60.00
1691 - 2014-2015 ASP	Vacation/In-Serv Day Camp	Fall 2014	55	2	57	\$3,250.00
1692 - 2014-2015 ASP	Vacation/In-Serv. Day Camp	Fall 2014	38	0	38	\$2,600.00
1694 - BLS - 6/7/14		Summer 2014	2	0	2	\$100.00
1695 - BLS - 7/5/14		Summer 2014	2	1	3	\$145.00
1696 - BLS - 8/2/14		Summer 2014	1	9	10	\$540.00
1698 - Summer Masters Swim	Program	Summer 2014	0	0	0	\$690.00
1699 - 360 Circuit- Late Spring	Session-Mondays	Spring 2014	7	0	7	\$420.00
1700 - 360 Circuit- Late Spring	Session-Wednesdays	Spring 2014	7	1	8	\$490.00
1701 - 360 Circuit Late Spring	Session-Thursdays	Spring 2014	2	0	2	\$120.00
1702 - 360 Circuit Summer	Session-Mondays	Summer 2014	11	1	12	\$610.00
1703 - 360 Circuit Summer	Session-Outdoor	Summer 2014	5	0	5	\$250.00
1704 - 360 Circuit Summer	Session-Thursdays	Summer	2	0	2	\$100.00

		2014			
1705 - Community CPR #1		Spring 2014	3	0	3 \$135.00
1707 - CPR - 7/12/14		Summer 2014	0	1	1 \$55.00
1708 - CPR - 8/9/14		Summer 2014	1	1	2 \$100.00
1709 - Summer Adventure Day	Camp-Special	Summer 2014	44	0	44 \$42,140.92
1710 - Summer Adventure Day	Camp-Week 1	Summer 2014	48	4	52 \$8,990.00
1711 - Summer Adventure Day	Camp-Week 2	Summer 2014	43	0	43 \$6,355.00
1712 - Summer Adventure Day	Camp-Week 3	Summer 2014	40	1	41 \$6,835.00
1713 - Summer Adventure Day	Camp-Week 4	Summer 2014	54	2	56 \$9,110.00
1714 - Summer Adventure Day	Camp-Week 5	Summer 2014	37	1	38 \$6,255.00
1715 - Spring Masters Swim Program		Spring 2014	4	6	10 \$1,110.00
1717 - Summer Adventure Day	Camp-Week 6	Summer 2014	32	0	32 \$5,825.00
1718 - Summer Adventure Day	Camp-Week 7	Summer 2014	37	1	38 \$6,510.00
1719 - 360 Circuit Late	Spring-Choice of 2 Sessions	Spring 2014	13	1	14 \$1,480.00
1720 - 360 Circuit Summer	Session-Choose 2 Sessions	Summer 2014	6	2	8 \$730.00
1721 - MSSAC Camp 2014-All	7 Weeks	Summer 2014	8	1	9 \$7,063.00
1731 - Morning Preschool	Swim Lesson-Session2	Summer 2014	0	0	0 \$140.00
1761 - MSSAC Camp 2014 -	Week 1	Summer 2014	15	0	15 \$2,450.00
1764 - MSSAC Camp 2014 -	Week 2	Summer 2014	18	1	19 \$2,700.00
1765 - MSSAC Camp 2014 -	Week 3	Summer 2014	27	2	29 \$5,160.00
1766 - MSSAC Camp 2014 -	Week 4	Summer 2014	34	0	34 \$5,320.00
1767 - MSSAC Camp 2014-	Week 5	Summer 2014	18	1	19 \$3,080.00
1768 - MSSAC Camp 2014-	Week 6	Summer 2014	23	1	24 \$4,715.00
1770 - MSSAC Camp 2014-	Week 7	Summer 2014	19	0	19 \$2,685.00
1771 - 360 Circuit Spring	Session-Tuesdays	Spring 2014	4	1	5 \$310.00
1773 - Ed2Go - Spring 2014		Spring 2014	1	1	2 \$165.00
1776 - Spring Dance Aerobics-	2X week	Spring 2014	7	1	8 \$449.00
1777 - Spring Dance Aerobics-	1X week	Spring 2014	1	0	1 \$38.00
1781 - Tai Chi Private Lesson		Spring 2014	2	0	2 \$150.00
1786 - CNY United Fall Soccer	- 2nd Grade Boys	Fall 2014	40	0	40 \$2,610.00
1787 - CNY United Fall Soccer	- 3rd/4th Grade Boys	Fall 2014	48	1	49 \$3,237.00
1788 - CNY United Fall Soccer	- 4th/5th Grade Girls	Fall 2014	32	0	32 \$1,990.00
1789 - CNY United Fall Soccer	- 5th/6th Grade Boys	Fall 2014	14	0	14 \$905.00

1792 - CNY United Fall Soccer	- 2nd/3rd Grade Girls	Fall 2014	41	2	43	\$2,795.00
1796 - Summer Lap Swimming	- 10 Card Punch	Summer 2014	5	5	10	\$410.00
1797 - Summer Lap Swimming	- 25 Card Punch	Summer 2014	12	1	13	\$1,005.00
1798 - Summer Masters Swim	Program - 10 Punch Card	Summer 2014	5	4	9	\$545.00
1799 - Tai Chi Private Lesson		Fall 2014	2	0	2	\$150.00
1800 - Dance Aerobics		Fall 2014	8	2	10	\$1,150.00
1801 - Kripalu Yoga for Adults	& Teens	Fall 2014	19	2	21	\$1,959.00
1802 - Cardio Fusion- 2 Days		Fall 2014	8	1	9	\$1,295.00
1803 - Cardio Fusion-Mondays		Fall 2014	6	0	6	\$445.00
1804 - Cardio Fusion-	Wednesday	Fall 2014	3	1	4	\$295.00
1806 - Morning Tai Chi for	Seniors	Fall 2014	2	0	2	\$145.00
1807 - Fall Zumba		Fall 2014	0	0	0	\$210.00
1808 - 360 Circuit Fall - Choose	2 Classes	Fall 2014	13	3	16	\$2,285.00
1809 - 360 Circuit-Mondays		Fall 2014	10	0	10	\$800.00
1810 - 360 Circuit-Wednesday		Fall 2014	4	0	4	\$320.00
1811 - 360 Circuit-Tuesday		Fall 2014	2	0	2	\$160.00
1812 - 360 Circuit-Thursday		Fall 2014	2	0	2	\$160.00
1813 - Bokwa		Fall 2014	10	1	11	\$890.00
1815 - Hodge Podge		Fall 2014	30	1	31	\$7,130.00
1816 - Fall Youth Instructional	Field Hockey-Grades 1-3	Fall 2014	10	1	11	\$495.00
1817 - Fall Youth Instructional	Field Hockey-Grades 3-5	Fall 2014	14	1	15	\$675.00
1819 - Little Stars Creative	Drama	Fall 2014	17	1	18	\$1,090.00
1820 - FAMILY Bingo Night		Fall 2014	31	0	31	\$217.00
1821 - Pumpkin Carving for	Kids	Fall 2014	9	0	9	\$90.00
1822 - Mommy & Me	Movement!	Fall 2014	19	1	20	\$731.00
1823 - Sounds of	Silence-Elementary Class	Fall 2014	13	0	13	\$1,960.00
1824 - Sounds of	Silence-Middle School Class	Fall 2014	8	0	8	\$1,200.00
1825 - Pre-School "Spinning	Sprouts"	Fall 2014	15	1	16	\$800.00
1826 - Beginner Hip Hop	Dance Class	Fall 2014	16	0	16	\$800.00
1827 - Tap/Jazz Combo Class		Fall 2014	4	0	4	\$200.00
1828 - Babysitter's	Training-Session 1	Fall 2014	14	0	14	\$980.00
1829 - Babysitter's	Training-Session 2	Fall 2014	14	0	14	\$990.00
1830 - Morning Youth Swim	Lessons	Fall 2014	15	1	16	\$890.00
1832 - Parent/Child Swim	Lessons	Fall 2014	9	2	11	\$625.00
1833 - Preschool Swim	Lessons	Fall 2014	12	3	15	\$855.00
1834 - Preschool Swim	Lessons	Fall 2014	11	4	15	\$865.00
1837 - Aquatic Fitness -	Session 1	Fall 2014	20	5	25	\$1,140.00
1838 - Aquatic Fitness -	Session 2	Fall 2014	14	1	15	\$698.00
1839 - Lap Swimming - 10	Card Punch	Fall 2014	15	5	20	\$750.00
1841 - Lap Swimming - 25	Card Punch	Fall 2014	12	4	16	\$1,230.00
1842 - Fall Masters Swim	Program - 10 Punch Card	Fall 2014	12	15	27	\$1,665.00
1843 - Masters Swim Program		Fall 2014	5	10	15	\$2,510.00
1846 - The Art of Chair Caning		Fall 2014	4	2	6	\$304.00
1847 - Step by Step Painting	with Spirited Paints!	Fall 2014	3	3	6	\$230.00
1848 - Portland Museum of Art	& Lunch At SMCC	Fall 2014	4	0	4	\$120.00
1849 - Tour of	Wadsworth/Longfellow	Fall 2014	7	1	8	\$240.00

1850 - Brighton Beach	Memoirs	Fall 2014	10	0	10	\$340.00
1851 - Souvenir		Fall 2014	7	0	7	\$238.00
1853 - The Art of Color Mixing		Fall 2014	7	3	10	\$757.00
1854 - Painting with the Color	Wheel	Fall 2014	9	3	12	\$956.00
1856 - Fall Open Art Studio		Fall 2014	11	2	13	\$705.50
1858 - Education Funding-Part	A	Fall 2014	0	1	1	\$10.00
1859 - Education Funding Part	B	Fall 2014	1	1	2	\$20.00
1860 - College Essay Writing	Workshop	Fall 2014	4	0	4	\$232.00
1861 - Making a Gingerbread	House	Fall 2014	5	0	5	\$245.00
1862 - Holiday Pies!		Fall 2014	8	2	10	\$320.00
1863 - Mad Science Session 1-	Robotics	Fall 2014	17	2	19	\$1,160.00
1864 - Mad Science Session	2-Take a Bite Out of Science	Fall 2014	19	1	20	\$1,520.00
1867 - Introduction to LEGO	Robotics & MindStorms Softwa	Fall 2014	14	2	16	\$980.00
1868 - Morning Youth Swim	Lessons	Fall 2014	10	3	13	\$755.00
1876 - Hobo/Turkey Train	Scenic Foliage Ride	Fall 2014	14	6	20	\$1,500.00
1877 - Intro to Piano		Fall 2014	4	0	4	\$300.00
1878 - Intro to Piano		Fall 2014	4	0	4	\$240.00
1879 - Intro to Piano		Fall 2014	3	1	4	\$250.00
1880 - Intro to Piano		Fall 2014	4	0	4	\$240.00
1881 - Intro to Piano		Fall 2014	3	0	3	\$180.00
1882 - Intro to Piano		Fall 2014	2	0	2	\$120.00
1884 - Colored Pencil	Workshop for Beginners	Fall 2014	3	1	4	\$64.00
1885 - Drawing Nature in	Colored Pencils	Fall 2014	5	0	5	\$324.00
1886 - Drawing on Black Paper		Fall 2014	5	0	5	\$202.00
1888 - Recipes from a Chinese	Grocery!	Fall 2014	7	0	7	\$175.00
1889 - Holiday	Appetizers-Asian Style	Fall 2014	6	0	6	\$150.00
1890 - CPR 9/13/14		Fall 2014	4	1	5	\$250.00
1891 - CPR 10/11/14		Fall 2014	1	1	2	\$100.00
1893 - CPR 12/13/14		Fall 2014	3	2	5	\$150.00
1894 - First Aid Training	9/20/14	Fall 2014	1	8	9	\$485.00
1895 - First Aid Training	12/20/14	Fall 2014	1	0	1	\$50.00
1896 - BLS 9/6/2014		Fall 2014	4	4	8	\$405.00
1897 - BLS 10/4/2014		Fall 2014	1	1	2	\$100.00
1898 - BLS 12/6/2014		Fall 2014	2	4	6	\$310.00
1899 - Wine Tasting at	Rachel's on the Green	Fall 2014	1	0	1	\$20.00
1900 - Communicating With &	Training Your Dog!	Fall 2014	8	2	10	\$100.00
1903 - Kiddie Kickers	Pre-School Soccer	Fall 2014	11	2	13	\$530.00
1905 - Aquatic Fitness 1 Day-	Session 1	Fall 2014	4	0	4	\$88.00
1906 - Aquatic Fitness 1 Day -	Session 2	Fall 2014	4	1	5	\$100.00
1908 - October Inservice Day	Camp - 10/14/14	Fall 2014	36	2	38	\$1,710.00
1920 - November Inservice	Day Camp - 11/26/14	Fall 2014	13	2	15	\$525.00
1925 - BLS 11/12/2014		Fall 2014	3	3	6	\$300.00

Program	FY2014 Revenues	FY2014 Expenses	FY2014 Net Cost	2010 Census	Totals
Library	\$5,945	\$390,029	\$384,084	x 38%	\$145,952
Recreation	\$631,081	\$650,436	\$19,355	x 38%	\$7,355
Channel 2					\$2,674
Total Assessment for FY2016					\$155,981
<i>Prior years' assessments:</i>					
				<i>FY2015</i>	<i>\$179,828</i>
				<i>FY2014</i>	<i>\$150,696</i>
				<i>FY2013</i>	<i>\$183,629</i>



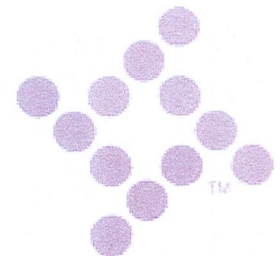
02/04/2015
12:40:34

TOWN OF CUMBERLAND
HISTORICAL ACTUALS COMPARISON REPORT

PAGE 1
glactrpt

FOR PERIOD 13 OF 2015

ACCOUNTS FOR: 410 Recreation	PRIOR YR3 ACTUALS	PRIOR YR2 ACTUALS	LAST YR ACTUALS	CURRENT YR ACTUALS	CY REV BUDGET
<hr/>					
001 General Fund					
0041 0370 Recreation Programs	-9,516.80	-15,322.80	-33,574.05	-6,664.66	-20,016.00
0041 0371 Fall Recreation Revenue	-51,867.80	-44,020.55	-42,962.48	-33,432.50	-60,622.00
0041 0372 Winter Recreation Revenue	-93,305.06	-90,504.09	-97,303.25	-94,394.26	-94,563.00
0041 0373 Spring Recreation Revenue	-22,978.54	-18,383.31	-43,761.22	-4,573.00	-32,000.00
0041 0374 Summer Recreation Revenue	-183,272.58	-202,393.50	-229,570.80	-36,024.92	-212,370.00
0041 0375 MSAD #51 Recreation Revenue	-17,093.52	-15,083.45	-15,401.92	.00	.00
0041 0385 After School Programs	-124,587.70	-119,172.04	-155,432.70	-107,709.40	-145,000.00
0041 0387 Adult Enrichment Revenue	.00	.00	.00	-4,615.00	.00
0041 0388 Adult Fitness Revenue	.00	.00	.00	-6,231.00	.00
0041 0570 Rec Soccer Revenue	-1,500.00	-9,499.89	-13,075.00	-7,456.00	-3,255.00
0041 0606 CPR/First Aid Revenues	.00	.00	.00	-50.00	.00
TOTAL General Fund	-504,122.00	-514,379.63	-631,081.42	-301,150.74	-567,826.00
TOTAL Recreation	-504,122.00	-514,379.63	-631,081.42	-301,150.74	-567,826.00
TOTAL REVENUES	-504,122.00	-514,379.63	-631,081.42	-301,150.74	-567,826.00
GRAND TOTAL	-504,122.00	-514,379.63	-631,081.42	-301,150.74	-567,826.00



02/04/2015
12:41:07

TOWN OF CUMBERLAND
HISTORICAL ACTUALS COMPARISON REPORT

PAGE 1
glactrpt

FOR PERIOD 13 OF 2015

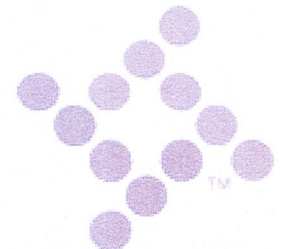
ACCOUNTS FOR:	PRIOR YR3 ACTUALS	PRIOR YR2 ACTUALS	LAST YR ACTUALS	CURRENT YR ACTUALS	CY REV BUDGET
410 Recreation					
001 General Fund					
0411 1000 Full Time Wages	135,307.88	168,648.76	154,731.79	108,146.27	170,055.00
0411 1010 Part Time Wages	122,375.73	126,375.90	142,791.18	101,442.77	127,386.00
0411 1020 Overtime	172.50	576.20	678.55	722.63	.00
0411 1165 Travel Stipend	138.44	1,799.72	1,799.72	1,107.52	1,800.00
0411 1170 After School Programs	48,951.75	49,144.25	69,017.68	42,483.88	63,915.00
0411 1210 Health Insurance	19,883.09	39,483.03	26,063.24	20,901.49	38,376.00
0411 1220 FICA	24,354.37	27,172.35	28,583.28	20,640.35	31,086.00
0411 1230 ICMA	6,467.41	9,795.83	8,652.37	8,324.76	12,607.00
0411 1240 Life Ins & Long Term Disabilit	366.18	1,168.14	1,031.06	910.39	769.00
0411 1250 Long Term Care Ins	167.62	325.91	336.75	240.06	404.00
0411 1260 MSRS Retire Life Ins	.00	.00	.00	3,639.37	3,593.00
0412 2000 Electricity	397.98	595.20	296.94	191.20	296.00
0412 2030 Telephone	1,028.74	1,040.22	1,057.22	552.82	851.00
0413 3010 Advertising	11,852.12	12,174.14	10,934.96	13,273.96	12,000.00
0413 3100 Credit Card Charges	2,014.50	1,552.01	24,874.86	17,945.88	20,000.00
0413 3140 Membership Dues	380.00	230.00	230.00	365.00	300.00
0413 3160 Misc Expenses	.00	657.78	441.17	7,562.33	.00
0413 3210 Postage	.00	.00	42.95	.00	.00
0413 3300 Office Supplies	1,041.89	1,354.85	1,935.38	892.18	1,245.00
0413 3330 Travel Expenses	134.45	209.85	995.03	198.80	500.00
0413 3670 Tennis Courts	6,000.00	.00	461.38	6,846.81	6,000.00
0413 4110 Special Events/Trips	62.40	.00	6,631.88	454.66	5,000.00
0413 4130 Camp Field Trips	16,102.15	17,856.45	18,974.99	31,587.58	16,251.00
0413 4140 Camp Supplies/Expenses	6,685.66	7,185.34	8,917.58	3,175.07	3,739.00
0413 4145 After School Program Expenses	10,272.87	11,382.32	14,180.82	3,450.05	9,000.00
0413 4150 Misc Recreation Programs	8,080.73	2,406.35	2,208.03	375.00	925.00
0413 4155 Enrichment Program Expenses	16,943.40	27,193.59	22,396.16	15,673.10	29,266.00
0413 4156 Early Release Programs	12,391.30	8,960.70	.00	.00	.00
0413 4158 Health & Fitness	.00	.00	.00	.00	3,000.00
0413 4170 Ski Program Expense	41,177.67	39,279.31	39,114.50	23,433.75	39,279.00
0413 4180 Sport Camp Expenses	6,104.00	14,646.02	9,541.00	9,683.00	11,541.00
0413 4190 Sport League Fees	4,525.00	5,495.00	4,455.00	5,320.00	4,455.00
0413 4200 Sport Program Expenses	24,013.46	22,714.76	32,323.96	15,861.37	15,863.00
0413 4210 Swim Instructor Training	59.47	867.60	1,783.46	.00	500.00
0413 4220 Team Uniforms & T-Shirts	2,461.00	141.98	.00	.00	.00
0413 4410 Rec Soccer Expenses	15,418.72	4,881.18	10,760.24	7,225.51	9,642.00
0415 5240 Training	521.38	910.00	3,313.08	855.00	1,200.00
0416 6090 Recreation Equipment	2,991.89	2,635.23	879.69	185.39	3,600.00
TOTAL General Fund	548,845.75	608,859.97	650,435.90	473,667.95	644,444.00
TOTAL Recreation	548,845.75	608,859.97	650,435.90	473,667.95	644,444.00
TOTAL EXPENSES	548,845.75	608,859.97	650,435.90	473,667.95	644,444.00
GRAND TOTAL	548,845.75	608,859.97	650,435.90	473,667.95	644,444.00

02/04/2015
 12:41:35

**TOWN OF CUMBERLAND
 HISTORICAL ACTUALS COMPARISON REPORT**
**PAGE 1
 glactrpt**
FOR PERIOD 13 OF 2015
ACCOUNTS FOR:
 450 Library

**PRIOR YR3
 ACTUALS**
**PRIOR YR2
 ACTUALS**
**LAST YR
 ACTUALS**
**CURRENT YR
 ACTUALS**
**CY REV
 BUDGET**
001 General Fund

0045 0392 Library Fines	-3,773.43	-4,830.74	-4,165.59	-3,616.66	-3,500.00
0045 0393 Library Interest Income	-310.76	-335.84	-217.38	-60.48	-200.00
0045 0394 Misc. Library Revenue	-1,717.15	-1,676.30	-1,561.95	-926.50	-1,000.00
TOTAL General Fund	-5,801.34	-6,842.88	-5,944.92	-4,603.64	-4,700.00
TOTAL Library	-5,801.34	-6,842.88	-5,944.92	-4,603.64	-4,700.00
TOTAL REVENUES	-5,801.34	-6,842.88	-5,944.92	-4,603.64	-4,700.00
GRAND TOTAL	-5,801.34	-6,842.88	-5,944.92	-4,603.64	-4,700.00



02/04/2015
12:41:59

PAGE 1
glactrpt

TOWN OF CUMBERLAND
HISTORICAL ACTUALS COMPARISON REPORT

FOR PERIOD 13 OF 2015

ACCOUNTS FOR:
450 Library

CY REV
BUDGET

LAST YR
ACTUALS

PRIOR YR2
ACTUALS

PRIOR YR3
ACTUALS

CURRENT YR
ACTUALS

001 General Fund

0451 1000 Full Time Wages	128,582.91	113,460.90	107,371.25	95,706.88	154,289.00
0451 1010 Part Time Wages	67,255.95	94,755.67	104,184.72	32,981.25	63,181.00
0451 1210 Health Insurance	41,724.50	50,090.04	60,334.01	32,404.97	49,302.00
0451 1220 FICA	14,086.44	15,189.82	16,402.34	10,013.93	16,636.00
0451 1230 ICMA	8,894.29	8,198.60	11,283.13	6,637.47	10,800.00
0451 Life Ins & Long Term Disabilit	995.18	911.94	988.58	608.16	1,018.00
0451 1240 Long Term Care Ins	733.12	591.83	619.22	338.80	463.00
0452 2000 Electricity	7,645.73	5,678.44	6,723.64	4,240.72	6,500.00
0452 2020 Heating Fuel	13,385.11	13,724.21	13,996.47	5,138.18	10,000.00
0452 2030 Telephone	1,241.68	1,250.10	1,323.72	770.65	1,500.00
0452 2060 Water/Sewer	716.40	218.30	187.39	106.46	263.00
0453 3010 Advertising	.00	.00	.00	91.50	.00
0453 3040 Equipment Maintenance	2,430.27	2,339.75	2,720.83	709.68	2,800.00
0453 3140 Membership Dues	765.00	680.00	846.00	300.00	845.00
0453 3160 Misc Expenses	1,322.33	1,060.07	1,669.71	859.73	1,200.00
0453 3202 Janitorial Supplies	1,246.03	1,457.51	588.35	610.18	1,350.00
0453 3210 Postage	1,257.14	1,128.13	831.58	138.46	1,100.00
0453 3300 Office Supplies	4,280.85	4,681.43	4,087.70	2,822.75	4,500.00
0453 3330 Travel Expenses	877.76	805.59	433.45	1,084.12	900.00
0453 3410 Capital Outlay	3,871.26	2,970.00	.00	3,000.59	4,000.00
0453 4000 Building Maintenance	4,477.08	6,003.52	4,927.92	4,890.74	6,000.00
0453 4500 Bindery	200.00	195.00	.00	.00	400.00
0455 5000 Contracted Services	8,840.00	9,100.00	9,152.00	5,024.00	9,360.00
0455 5050 Computer Maintenance	1,808.80	3,349.20	2,189.70	3,184.93	2,500.00
0455 5240 Training	1,883.86	2,445.30	856.00	933.95	1,800.00
0456 6000 Equipment & Tools	2,099.95	2,083.25	1,955.47	1,552.00	1,800.00
0457 7000 Book/Mag/Av	35,049.74	36,524.60	35,775.96	21,941.26	35,100.00
TOTAL General Fund	355,671.38	378,893.20	390,029.14	236,091.36	387,607.00
TOTAL Library	355,671.38	378,893.20	390,029.14	236,091.36	387,607.00
TOTAL EXPENSES					
GRAND TOTAL	355,671.38	378,893.20	390,029.14	236,091.36	387,607.00

